

How much money do you think Providers made an hour in 2005?

Cuánto dinero usted cree que las Proveedoras ganaban por hora en el año 2005?

Answer:
\$2.23

Providers Are Special!

¡Somos Especial!

We Educate
Educamos

Providers Are | Somos: :

- ✓ Caregivers
- ✓ Nurses
- ✓ Coordinators
- ✓ Chefs
- ✓ Cuidadoras
- ✓ Enfermeras
- ✓ Coordinadoras
- ✓ Concineras !



X We are NOT babysitters | NO somos niñeras

Union is strength.



What Is A Union?

¿Que Es Un Sindicato?

Stronger Together:

What Have We Won as a Union and How Did We Win It
¿Qué hemos ganado como unión y cómo la ganamos?

Más fuertes juntos!



What We've Won Together

Lo Que Hemos Obtenido Juntos

	2002 - 2013	July 2020	MONTHLY GAIN <u>per</u> <u>child</u> Since Union
Licensed Child Care Home			
Infant/ Toddler	\$160	\$249.	\$382.70
Preschool	\$160	\$195	\$150.50
School Age	\$149	\$180	\$133.30
License - Exempt (Relative Care)	\$89	\$149	\$258

Rates We Won! (Licensed)

Tarifas Que Ganamos (Con Licencia)

Care 4 Kids - Licensed Family Child Care Homes Weekly Rates Effective: July 1, 2020 - June 30, 2022						
Full-Time Plus Care - 51 to 65 hours/week		Eastern	North Central	Northwest	South Central	Southwest
Licensed Family Child Care Homes	Infant/Toddler	272	302	319	334	363
	Pre-School	213	236	249	260	283
	School-Age	197	218	229	242	260
Full-Time Care - 35 to 50 hours/week		Eastern	North Central	Northwest	South Central	Southwest
Licensed Family Child Care Homes	Infant/Toddler	206	227	236	249	270
	Pre-School	159	175	185	195	209
	School-Age	149	163	172	180	197
Half-Time Care - 16 to 34 hours/week		Eastern	North Central	Northwest	South Central	Southwest
Licensed Family Child Care Homes	Infant/Toddler	138	155	162	171	185
	Pre-School	111	121	126	132	146
	School-Age	96	110	115	120	128
Quarter Time Care - 1 to 15 hours/week		Eastern	North Central	Northwest	South Central	Southwest
Licensed Family Child Care Homes	Infant/Toddler	70	77	82	84	93
	Pre-School	52	62	67	69	74
	School-Age	47	52	55	59	67

Rates We Won!

Tarifas Que Ganamos

Care 4 Kids - Unlicensed Relative Care - Weekly Rates Effective: August 1, 2021 to June 30, 2022*						
Full-Time Plus Care - 51 to 65 hours/week		Eastern	North Central	Northwest	South Central	Southwest
Unlicensed Care by a Relative or Care in the Child's Home	Infant/Toddler	230	230	230	230	230
	Pre-School	230	230	230	230	230
	School-Age	230	230	230	230	230
Full-Time Care - 35 to 50 hours/week		Eastern	North Central	Northwest	South Central	Southwest
Unlicensed Care by a Relative or Care in the Child's Home	Infant/Toddler	173	173	173	173	173
	Pre-School	173	173	173	173	173
	School-Age	173	173	173	173	173
Half-Time Care - 16 to 34 hours/week		Eastern	North Central	Northwest	South Central	Southwest
Unlicensed Care by a Relative or Care in the Child's Home	Infant/Toddler	104	104	104	104	104
	Pre-School	104	104	104	104	104
	School-Age	104	104	104	104	104
Quarter Time Care - 1 to 15 hours/week		Eastern	North Central	Northwest	South Central	Southwest
Unlicensed Care by a Relative or Care in the Child's Home	Infant/Toddler	52	52	52	52	52
	Pre-School	52	52	52	52	52
	School-Age	52	52	52	52	52

More Benefits

Más beneficios



College Scholarships for member children
Becas universitarias



Workshops based on your needs
Talleres basados en tus necesidades



Discounts on AT&T, Redleaf, BJ's and Liability
Descuentos en AT&T, Redleaf, BJ's y seguro de responsabilidad civil



Social and Networking Events
Eventos sociales y de redesvents

Professional Development

Desarrollo Profesional

- ★ **\$200,000 per year for classes/workshops**
\$200,000 por año para clases/talleres
- ★ **\$500 CDA Bonus / CDA Bono de \$500**
- ★ **\$750 NAFCC Bonus & 2% more / NAFCC Bono de \$750 & 2% mas**
- ★ **3% more for an Associate's Degree in Early Childhood**
3% más por tener un Asociado en Primera Infancia
- ★ **15% differential for caring for special needs children**
15% más para niños con necesidades especiales

CCACREGISTRY.ORG



SEIUMB Home Page ...
seiumb.com

SEIU Member Benefits

Welcome to SEIU Member Benefits!

MOBILE

SEIU Member Benefits Create Your Mobile Shortcut to seiumb.com — It's Easy!

Make accessing the SEIU Member Benefits website easier than ever. Get tips and tools — with just one tap.

iPhone

Visit seiumb.com on your mobile web browser, then tap the "share" icon (iPhone) or your navigation bar (Android).

From the drop-down menu, select "Add to Home Screen."

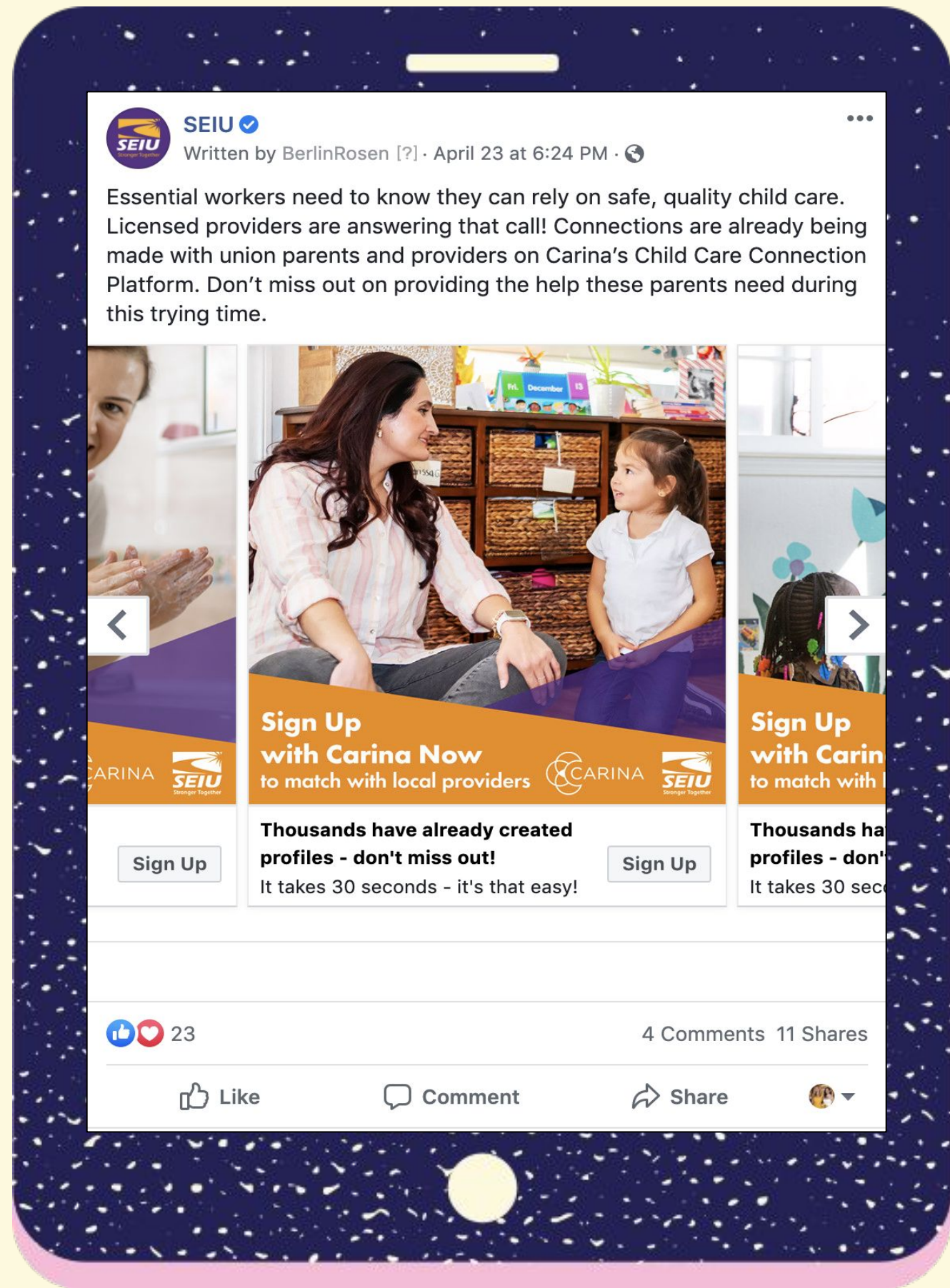
Tap "Add" or "Done" to complete the process, confirm your shortcut.

The seiumb.com shortcut icon will appear on your device screen. Simply tap to get the latest updates from SEIU Member Benefits.

Your SEIU Member Benefits ... right at your fingertips!

Add SEIUMB.com to your mobile device for quick and easy access!

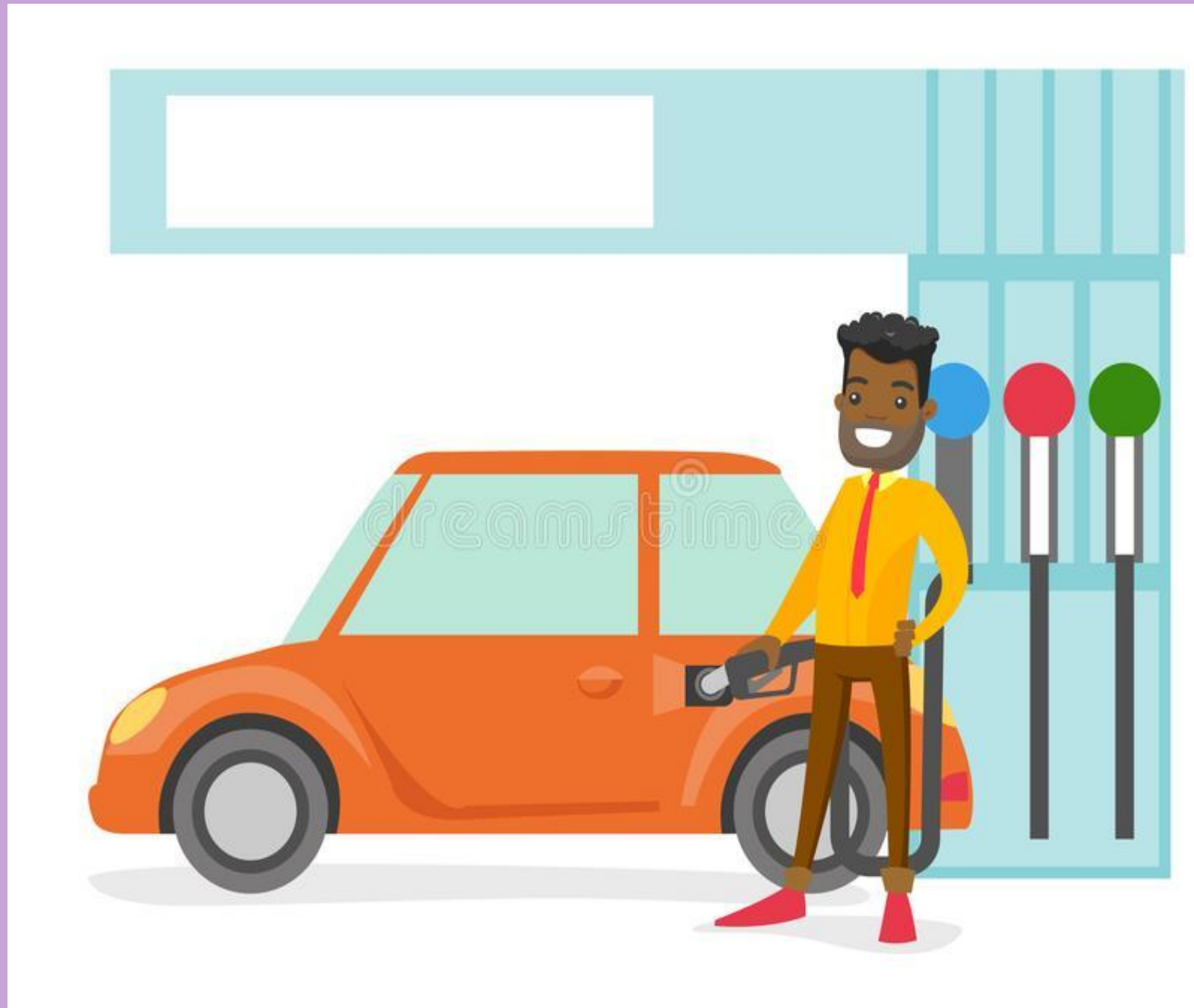






- Personal Protection Equipment PPE | **Equipo de protección**
- Nurse Hotlines | **Linea Informativa de Salud**
- Grants | **Becas** [CT Kick Start, WBDC, PPP, EIDL, Ready Set Rebuild]
- Care 4 Kids Expansion 60% FPL | **Mas dinero para C4K**
- Parents in School Qualify for Care 4 Kids | **Padres en Escuelas Califican para C4K**
- Vaccine Webinars | **Presentación sobre vacunas**
- First Responder Recognition Resources from Governor Lamont | **Reconocimiento del Gobernador Lamont como Trabajadoras Esenciales y recursos adicionales**

★ DUES | Cuotas ★



- ★ Dues are 1.5% of your monthly C4K payment. That is a \$1.50 for every \$100
Las cuotas son el 1.5% de su Pago mensual de C4K. Eso es \$ 1.50 por cada. \$100
- ★ Cap of \$43 per month
Un maximo de \$43 por mes

Top 10 Reasons to Join Our UNION

Top 10 Razones para Afiliarse a Nuestra UNIÓN

1. Rate increase or bonus every year | Aumentos de tarifas o bono cada año
2. Incentives to get licensed | Incentivos de obtener licencia
3. Union support when you need it | Ayuda sindical cuando lo necesitas
4. Keeping families with low cost childcare | Manteniendo familias con cuidado de bajo costo
5. CDA & NAFCC \$\$\$ | Mas dinero para CDA y acreditacion
6. Networking with other childcare providers | Red de contacto con otras proveedores
7. Free classes and workshops | Clases y entrenamientos gratis
8. Higher licensed rates for Infants | Pago mas alto para cuidado de infantes (Lic.)
9. Ongoing voice with the OEC & Legislature | Representación con la OEC y Lesgilatura
10. Scholarships/free college for your family | Becas universitarias/estudios gratis para su familia

SEIU CSEA Team | Nuestro Equipo



★ POP Presenters | Presentadoras

- Dorotheia Barnett
- Jacqueline Ulloa
- Maria Reyes
- Naomi Mitchell
- Lorry Medina

★ Your | Tu Staff

- Eva Bermudez
- Steffi Martinez
- Stacey Malitz

Call Us At | **Llamanos al** (475)675-0837

email: childcare@csea760.com

Queen Freelove, **Childcare President/a**